

## **Express Meter 2.2**

## **License Management for all Windows Networks**

### **Ensure software license compliance - and save thousands of dollars at the same time**

Noncompliance with software license agreements is no joke. It is a felony for a company to have as few as 10 unauthorized copies of software worth a total of just \$2,500. Your company could be fined up to \$250,000, and you could go to jail for up to 5 years. In 1992, the Software Publishers Association took action against 747 companies, resulting in \$3.9 million in fines. Is your company prepared for an SPA audit?

Fortunately, it's easy to stay legal with Express Meter. Express Meter controls access to applications to ensure license compliance, and gives you the reports you need to prove it. What's more, Express Meter can save you up to 80% of your software costs - up to \$1000 or more per user on software from Microsoft®, Lotus®, and WordPerfect® - while actually increasing user access to the software. All for just a few dollars per user. Sound too good to be true?

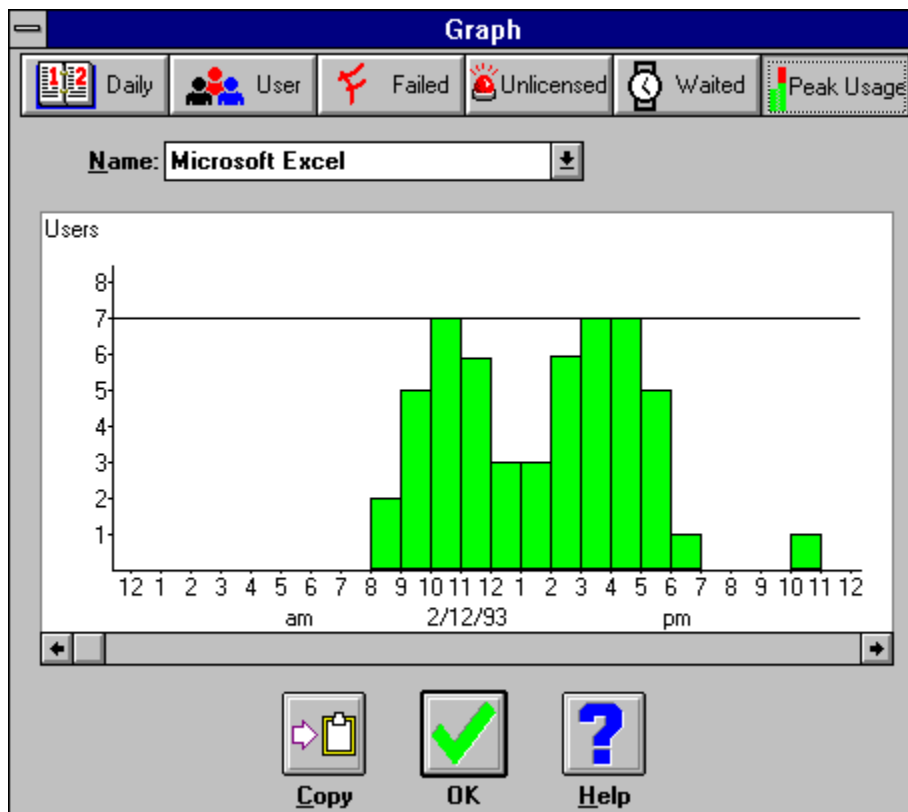
Most popular software today is sold under a "concurrent usage" license agreement. This allows a corporation to share software among users - provided that there are never more users than the number of licenses owned. The problem is that until now, there has been no good way to manage these concurrent licenses. That's where Express Meter fits in. Not only does Express Meter allow you to optimally use your concurrent license agreements while guaranteeing compliance, it lets you monitor and control shared applications to an extent not previously possible.

Here's an example of how using Express Meter can save you money while actually increasing access to your company's software. Say you have a company of 100 people, of which 50 need access to a particular \$500 software program. Without some way to take advantage of concurrent usage license agreements, you'd have to buy a copy of this software package for each of these 50 users - at a cost of \$25,000. Suppose, however, that only 10 of the users ever need to use this software package at any given time. Using Express Meter, you only need to buy 10 licenses - costing only \$5,000 - plus you can now allow easy and fully legal networked access to this software to all 100 people in your company. You have saved \$20,000 in software costs - while actually doubling the number of users that can legally access the software!

## Use software licenses legally and optimally

If Express Meter simply let you lock out users who tried to run an application when all licenses were in use, it would pay for itself many times over. But Express Meter lets you do much more than this - it allows you to optimize your license usage like no other metering package. Optimize usage of "application suites" such as Microsoft Office and Lotus SmartSuite. Allow users to add themselves to a waiting list when all licenses are in use, and be notified when a license becomes available. Set usage limits for applications, after which current users will be notified if others are waiting. Meter all copies of a particular application, or just a specific copy. Choose whether or not to meter locally installed copies. Perform a quick virus check at every application launch. And much more.

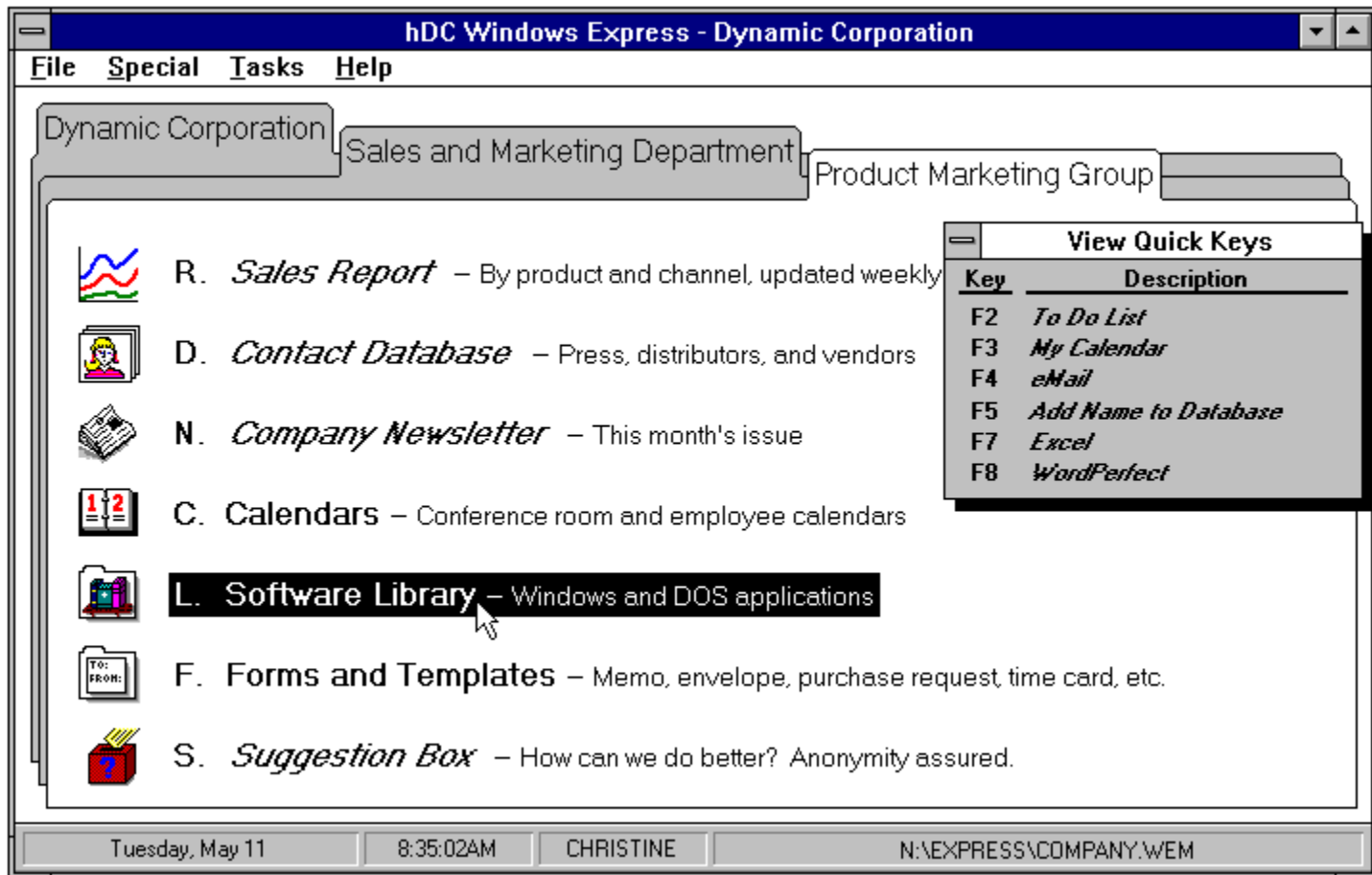
Express Meter also allows you to monitor and gather valuable statistics on software usage patterns. It tracks every application launch, including who launched the application, at what time, and for how long - all transparently to the user. Collect statistics on all applications, whether they are metered or not. View the statistics using a full set of included reports and graphs, or easily export the data to another application for further analysis. Express Meter can help you determine how many licenses of an application to purchase initially, and can alert you if more are needed.



Track application usage with Express Meter - see who is using what applications, at what times and for how long.  
Monitor peak usage to determine true license needs.

## Share applications graphically

Express Meter includes three concurrent runtime licenses to Windows Express 4.0, the most comprehensive, powerful network menuing system available for Windows. Using Windows Express, you can provide your company with a graphical, intuitive interface to shared applications and documents - and one that you can administer remotely. Windows Express can be used as a shell or in conjunction with another shell.



Organize shared applications and documents into familiar, intuitive folders using the included Windows Express.  
 Launch applications with a single keystroke or mouse click.

Windows Express is based on Express Enhanced Commands, giving it unsurpassed power in launching and managing programs. Launch multiple applications at once, each with a specified position and size, icon, and window caption. Run any of 75 included scripts. Record and play macros. Execute DOS, DDE, and DLL commands. Or perform any combination of these in a single keystroke or mouse click.

### Compatible with all Windows systems

Express Meter is easy to add to any Windows system. It requires no TSR, works with any Windows network, is compatible with all Windows shells, and can meter any Windows or DOS application. Metering is performed completely transparently to the user.

## An example of how Express Meter can save \$100,000 in software costs

Lets say you have 100 people in your company or department, with the software requirements shown below. By using Express Meter you can save over \$100,000 - and at the same time actually allow everyone in your company to access every application! Plus you get invaluable software usage statistics, an intuitive interface to shared applications and documents, and the peace of mind of knowing that you are fully complying with your software license agreements. All for just a few dollars per user!

<b>Application</b>	<b>Concurrently licensed?</b>	<b>Users</b>	<b>List price per user</b>	<b>Price per user with Express Meter*</b>	<b>Savings</b>
Aldus® PageMaker®	YES	10	\$895	\$17.90	\$7,160
Aldus Freehand®	YES	15	\$595	\$17.85	\$7,140
Borland® Quattro® Pro	YES	20	\$495	\$19.80	\$7,920
Borland ObjectVision® Pro	YES	10	\$495	\$9.90	\$3,960
Microsoft® Word	YES	40	\$495	\$39.60	\$15,840
Microsoft Excel	YES	30	\$495	\$29.70	\$11,880
Microsoft PowerPoint®	YES	15	\$495	\$14.85	\$5,940
Microsoft Project	YES	10	\$695	\$13.90	\$5,560
SPC Harvard Graphics®	YES	20	\$595	\$23.80	\$9,520
Symantec™ Time Line®	YES	10	\$699	\$13.98	\$5,592
WordPerfect WordPerfect®	YES	50	\$495	\$49.50	\$19,800
<b>Total saved by using Express Meter:</b>					<b><u>\$100,312</u></b>

### **Express Meter Features**

- Optimally manage your concurrent software licenses, saving thousands in software costs while providing easy, legal networked access to all users.
- Includes Express Meter for monitoring and controlling applications licenses.
- Includes Windows Express for sharing applications and documents on a network in a graphical, intuitive way.
- Works with any Windows network.

### **Express Meter Features**

- **New!** Meter "application suites" like Microsoft Office and Lotus SmartSuite.
- **New!** Savings Meter shows you at a glance whether you're in compliance with all of your license agreements, and how much you're saving or increasing software access by using Express Meter.
- **New!** Trial libraries let you collect software usage statistics and establish the benefit of metering - before you purchase.
- **New!** Detached Client support lets you meter software usage on a laptop - even when you're on the road.
- **Improved!** Workstation installation can now be performed automatically and remotely.
- **Improved!** User configuration can be administered remotely.
- **Improved!** Library upgrades are easier than ever - it just takes one phone call.
- Meters Windows applications or DOS applications launched from Windows.
- Works with any Windows shell.
- Does not require a TSR.
- Operates transparently to the user.
- Optionally performs a virus check on every launch of a shared application.
- Editor is a full Windows application, with easy data transfer of usage data to other Windows applications.
- You can choose for each application whether to prevent unlicensed launches, warn the user, or simply gather statistics.
- Can meter all copies of an application or a particular copy.
- Optionally meters local copies of an application.
- When all licenses are in use, users can add themselves to a waiting list and be notified when a license becomes available. Current users can be warned that other users are waiting.
- Application licenses are recovered even if users crash or turn off their systems.
- Adding applications to be metered is easy - just drag-and-drop them from File Manager.

### **Windows Express Features**

- Create a company-wide interface to shared applications and documents.
- Uses an intuitive folder metaphor that users find natural and efficient.
- Folders can be nested to any depth.
- Folder items are completely configurable, and can launch applications, open documents, run macros, and much more.
- Items can be customized per group or per user using unique Express Network Environment Variables.
- Can be administered remotely over a network - even while files are in use.
- Separate editor application controls access to menu editing.
- Password protect sensitive menus, folders and files.
- Users ability to open menu files or run applications not on the menu can be restricted.
- Create customized help screens for items.
- Supports all Windows networks.
- Can be used as the Windows shell or in addition to another shell.
- Easily import existing Program Manager group files, or drag-and-drop applications from File Manager.
- Full icon editor and library manager includes 11 drawing tools and supports IL, WIL, NIL, EXE, DLL, GRP, ICN, and ICO icon file formats.
- Outline view provides easy way to display menu structure.
- Display full system information.
- Includes three screen savers, as well as the ability to run any After Dark® or Microsoft screen saver.
- Express Enhanced Commands provide powerful application launching and management.

### **Enhanced Commands**

- Run applications, documents, or Express MicroApps.
- Control how an application is launched - set the initial directory, set the applications icon, size and position the window, override the default window caption, customize the DOS environment passed to the application, hide the application, and much more.
- Prompt for document files or command line parameters.
- Record and play back macros that send keystrokes and mouse actions to an application.
- Play any of 75 predefined scripts - for example, set your printer to landscape mode, or restart

Windows.

- Execute any DOS command such as Copy or Move.
- Control applications through Dynamic Data Exchange (DDE).
- Call entry points in a Dynamic Link Library (DLL).
- Perform any combination of the above in a single Enhanced Command.
- Build Enhanced Commands with the graphical Command Builder.

### **System Requirements**

- Microsoft Windows 3.0 or later.
- 2 MB free disk space for full installation.
- Express Meter uses 13K of memory. Its editor uses 17K, in addition to the 55K shared by all Express applications.
- Windows Express uses 25K of memory, in addition to the 55K shared by all Express applications. The editor uses an additional 75K when running.

### **Express Systems**

† Product pricing and concurrent licensing provisions were obtained from vendors on 3/1/93. Pricing and licensing structures change from time to time; check with your product's vendor to determine current pricing and concurrent license availability.

\* Based on an internal Express study which shows that 95% of the time, 20% or less of a product's licenses are in use (thus using 20% of the original licenses would cause the user to wait for a license less than 5% of the time, which was deemed acceptable).

© 1994 Express Systems, Inc. Express, Express Meter, Windows Express, and Enhanced Command are trademarks of Express Systems, Inc. Other brand and product names are the trademarks of their respective owners.